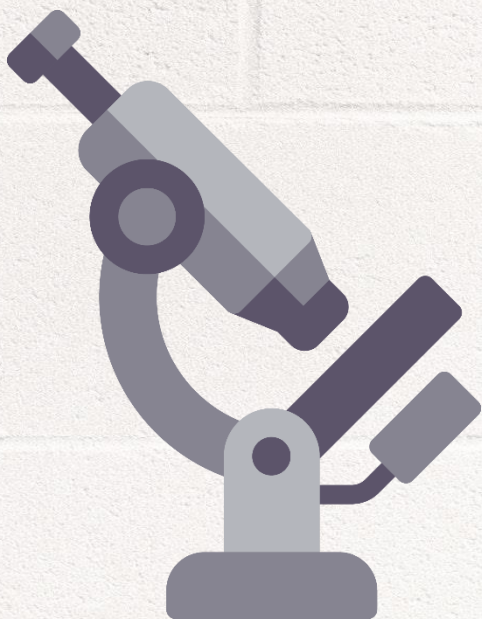


IGNOU MAPC Dec 18 Exam

# DIAGNOSIS

MPC- 005

RESEARCH METHODS IN PSYCHOLOGY



**[www.MAPChelp.com](http://www.MAPChelp.com)**

**MASTER OF ARTS (PSYCHOLOGY)**

**Term-End Examination**

**December, 2018**

**MPC-005 : RESEARCH METHODS IN  
PSYCHOLOGY**

*Time : 2 hours*

*Maximum Marks : 50*

*Note : All sections are compulsory.*

**SECTION - A**

Answer any two from the following questions in  
about 450 words each : 2x10=20

1. What is the purpose of sampling ? Discuss the various sampling methods. 2+8
2. Differentiate between experimental research and field experiment. Discuss the strengths and weaknesses of field experiment. 6+4
3. What is quasi - experimental design ? Explain its advantages and disadvantages. 3+7
4. Discuss the various steps and approaches to discourse analysis. 10

**SECTION - B**

Answer **any four** from the following questions in  
about 250 words each : **4x6=24**

5. Define validity. Discuss the various threats to internal validity. **2+4**
  
6. What are the objectives of research design ? Explain various types of research design. **3+3**
  
7. Discuss the potential difficulties in the formulation of a good hypothesis. **6**
  
8. Explain various types of factorial design. **6**
  
9. What are the various steps involved in analysing qualitative research data ? **6**

**SECTION - C**

Write short notes on **any two** from the following  
in about 100 words each : **2x3=6**

10. Placebo bias **3**
  
11. Post HOC fallacy **3**
  
12. Steps in Ethnographic research. **3**

Q No	Focus Prediction	ERR Priority	Que Repeat	Marks
1	YES	2	YES	2+8
2	YES+NO	3	YES+NO	6+4
3	NO+YES	1	YES	3+7
4	YES	1	YES	10
5	YES	1	YES	2+4
6	NO	3	YES	3+3
7	NO	2	NO	6
8	NO	3	YES	6
9	YES	1	YES	6
10	NO	1	NO	3
11	NO	2	NO	3
12	YES	1	YES	3

Success Rate of ERR for Dec 18 Exam	
Without Option (Out of 50 Marks)	
Marks	Percentage
44	88%

Success Rate of MAPC Focus for Dec 18 Exam	
Without Option (Out of 50 Marks)	
Marks	Percentage
35	70%

Question Repeat for Dec 18 Exam	
Without Option (Out of 50 Marks)	
Marks	Percentage
47	94%

Unit Block	1	2	3	4	Total
1	3	6	**	10,6	25
2	**	3	10,6	**	19
3	**	6	10	**	16
4	3	**	10	6	19
Total	6	15	26	22	79

## Guessing For Dec 18 Exam was

1 <sup>st</sup> Priority	
Block	Unit
1	1,2
2	**
3	3,4
4	1,3,4
55% of Questions	
43 Marks	

2 <sup>nd</sup> Priority	
Block	Unit
1	3,4
2	2,4
3	**
4	2
30% of Questions	
23 Marks	

3 <sup>rd</sup> Priority	
Block	Unit
1	**
2	1,3
3	1,2
4	**
15% of Questions	
12 Marks	

Actual Marks in Dec 18 Exam		
38 Marks	19 Marks	22 Marks
48% Que	24% Que	28% Que