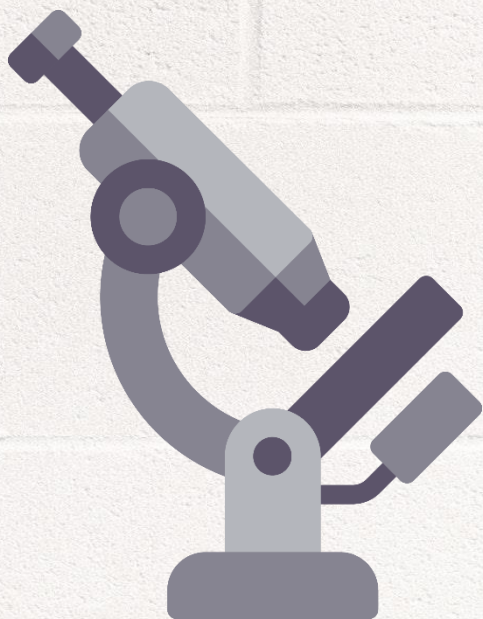


IGNOU MAPC Dec 18 Exam

DIAGNOSIS

MPC-006

STATISTICS IN PSYCHOLOGY



www.MAPChelp.com

MASTER OF ARTS (PSYCHOLOGY)

Term-End Examination

December, 2018

MPC-006 : STATISTICS IN PSYCHOLOGY

Time : 2 hours

Maximum Marks : 50

Note : (i) All sections are compulsory.

(ii) Use of simple calculator is permitted.

SECTION - A

Answer **any two** of the following questions in about **450** words each : $2 \times 10 = 20$

1. Differentiate inferential from descriptive statistics. $4+6$
Describe steps in setting up the level of significance.
2. Discuss the rational for using non-parametric statistics and describe its advantages and disadvantages. $3+7$
3. Explain partial correlation. Compute Spearman's Rho for the following data : $3+7$

Data : A	60	54	59	44	49	48	40
Data : B	55	60	69	70	67	66	54

4. Compute ANOVA for the following data : 10

Group : 1	2	2	3	3	2	4	2	3	2
Group : 2	3	2	2	2	3	3	2	2	2
Group : 3	3	3	3	4	4	4	1	1	1

Critical value : 19.41 for 0.05 level of significance
99.46 for 0.01 level of significance

SECTION - B

Answer any four of the following in about 250 words each : 4×6=24

5. Compute t test for the data given below : 6

Group A : 10, 4, 3, 2, 4, 2, 5, 10, 5, 5

Group B : 4, 6, 8, 2, 9, 1, 12, 13, 10, 10

Critical value : 2.10 at 0.05 level of significance

2.88 at 0.01 level of significance

6. Compute Mann Whitney U test for the following data : 6

Group A : 100, 86, 94, 85, 69, 70, 82, 74, 64, 59

Group B : 96, 92, 90, 84, 80, 78, 76, 65, 62, 50

7. Compute Chi square for the following data : 6

responses

Male	Agree	Disagree	Not decided
	20	10	20
Female	10	20	30

Critical value :

5.991 at 0.05 level of significance

9.210 at 0.01 level of significance

8. Discuss the importance and application of standard error of mean. 6

9. Discuss factors causing divergence in normal curve. 6

SECTION - C

Write short notes on any two of the following in about 100 words each :

2x3=6

10. Point biserial correlation.

3

11. Linear regression.

3

12. Two ways Analysis of Variance.

3

Get Solved Question Papers on www.springseason.in

MPC 006 Dec 18
Paper's Answers

IGNOU
MAPC

Q No.	Numerical	Answer	
3	Spearman	0.00	**
4	ANOVA	0.3077	Null Hypothesis is Accepted
5	T-test	-1.57	Null Hypothesis is Accepted
6	U Test	49 & 51	**
7	Chi-Square	7.82	Null Hypothesis is Accepted (0.01) & Rejected (0.05)

MAPC HELP.com

MAPC HELP.com

Q No	Focus Prediction	ERR Priority	Que Repeat	Marks
1	YES	1	YES	4+6
2	YES	2	YES	3+7
3	YES	3+1	YES	3+7
4	YES	1	YES	10
5	NO	3	YES	6
6	YES	1	YES	6
7	YES	1	YES	6
8	NO	3	YES	6
9	YES	1	YES	6
10	YES	1	YES	3
11	YES	3	YES	3
12	NO	3	YES	3

Success Rate of ERR for Dec 18 Exam	
Without Option (Out of 50 Marks)	
Marks	Percentage
41	82%

Success Rate of MAPC Focus for Dec 18 Exam	
Without Option (Out of 50 Marks)	
Marks	Percentage
44	88%

Question Repeat for Dec 18 Exam	
Without Option (Out of 50 Marks)	
Marks	Percentage
50	100%

Unit Block	1	2	3	4	Total
1	**	10	**	**	10
2	**	7,3	3	**	13
3	6	6,6	10,3	3	34
4	10	6	**	6	22
Total	16	38	16	9	79

Guessing For Dec 18 Exam was

1 st Priority		2 nd Priority		3 rd Priority	
Block	Unit	Block	Unit	Block	Unit
1	2	1	1	1	3,4
2	2	2	4	2	1,3
3	1,3	3	**	3	2,4
4	2,4	4	1	4	3
72% of Questions		20% of Questions		8% of Questions	
57 Marks		16 Marks		6 Marks	
Actual Marks in Dec 18 Exam					
51 Marks		10 Marks		18 Marks	
65% Que		13% Que		22% Que	