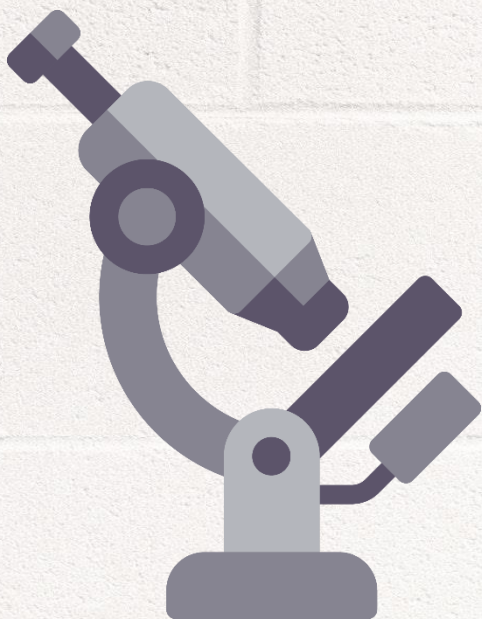


IGNOU MAPC Dec 18 Exam

DIAGNOSIS

MPCE - 011

PSYCHOPATHOLOGY



www.MAPChelp.com

No. of Printed Pages : 2

MPCE-011

01976

MASTER OF ARTS (PSYCHOLOGY)

Term-End Examination

December, 2018

MPCE-011 : PSYCHOPATHOLOGY

Time : 2 hours

Maximum Marks : 50

Note : All sections are compulsory.

SECTION - A

Answer any two of the following questions in
about 450 words each : $2 \times 10 = 20$

1. Elucidate the symptoms and causes of attention deficit hyperactivity disorder. 5+5
2. Discuss the causes and treatment of bipolar disorder. 5+5
3. Discuss the diagnostic criteria, causes and treatment of paranoid personality disorder. 4+3+3
4. Discuss Mood Disorders due to general medical condition. 10

SECTION - B

Answer any four of the following questions in
about 250 words each : 4x6=24

5. ✓ Describe Manic and depressive episode in Bipolar disorder. 6
6. ✓ Discuss the aetiology of post-traumatic stress disorder. 6
7. ✓ Discuss the causes of substance induced psychotic disorders. 6
8. Describe the cluster C personality disorders. 6
9. ✓ Explain the humanistic approach to psychopathology. 6

Get Solved Question Papers on www.springseason.in

SECTION - C

Write short notes on any two of the following in
about 100 words each : 2x3=6

10. ✓ Hypochondriasis 3
11. Parkinson's disease 3
12. ✓ Depersonalisation disorder. 3

Q No	Focus Prediction	ERR Priority	Que Repeat	Marks
1	YES	1	YES	10
2	YES	3	NO	10
3	YES	2	YES	10
4	YES	3	NO	10
5	NO	3	NO	6
6	YES	2	NO	6
7	YES	1	YES	6
8	YES	2	YES	6
9	YES	3	YES	6
10	NO	1	YES	3
11	YES	3	YES	3
12	NO	1	NO	3

Success Rate of ERR for Dec 18 Exam			
With Options		Without Option	
Out of 79 Marks		Out of 50 Marks	
Marks	Percentage	Marks	Percentage
44	56%	44	88%

Success Rate of MAPC Focus for Dec 18 Exam			
With Options		Without Option	
Out of 79 Marks		Out of 50 Marks	
Marks	Percentage	Marks	Percentage
67	85%	47	94%

Question Repeat for Dec 18 Exam			
With Options		Without Option	
Out of 79 Marks		Out of 50 Marks	
Marks	Percentage	Marks	Percentage
44	56%	47	94%

Unit Block	1	2	3	4	Total
1	6	**	**	10	16
2	**	**	6	3,3	12
3	**	10,6	10,3	**	29
4	6	**	6	**	12
5	**	**	**	10	10
Total	12	16	25	26	79

Guessing For Dec 18 Exam was

1 st Priority		2 nd Priority		3 rd Priority	
Block	Unit	Block	Unit	Block	Unit
1	3, 4	1	**	1	1,2
2	1,4	2	2,3	2	**
3	**	3	**	3	1,2,3,4
4	2,3	4	1	4	4
5	**	5	4	5	1,2,3
50% of Questions		21% of Questions		29% of Questions	
40 Marks		17 Marks		23 Marks	
Actual Marks in Dec 18 Exam					
22 Marks		22 Marks		35 Marks	
28 %		28 %		44 %	