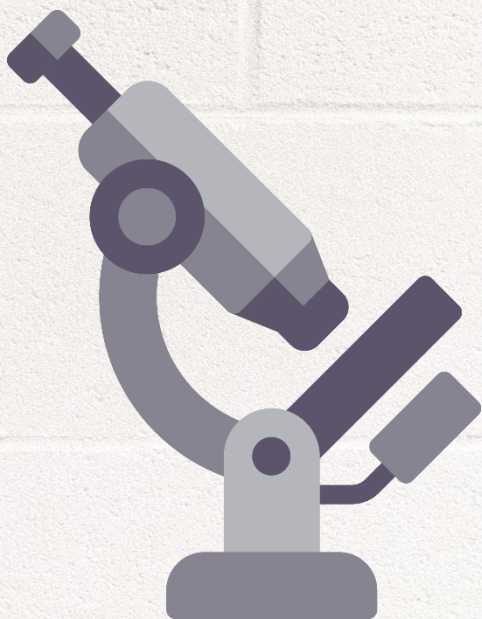


IGNOU MAPC Dec 18 Exam

DIAGNOSIS

MPCE-012

PSYCHODIAGNOSTICS



www.MAPChelp.com

MASTER OF ARTS (PSYCHOLOGY)

Term-End Examination

December, 2018

MPCE-012 : PSYCHODIAGNOSTICS

Time : 2 hours

Maximum Marks : 50

Note : All sections are compulsory.

SECTION - A

Answer any two from the following questions in
about 450 words each : $2 \times 10 = 20$

1. Discuss various ethical concerns in assessment. 10
2. Discuss the four sequential phases in delivering psychological treatment. 10
3. What is the purpose of 'Diagnostic Assessment' ? 4+6
Differentiate between descriptive assessment and predictive assessment.
4. Discuss any three tests of intelligence. 10

SECTION - B

Answer **any four** questions from the following in
about 250 words each : **4x6=24**

5. Discuss two objective tests of personality testing. 3+3
6. Describe assessment in vocational guidance testing and job selection. 6
7. Explain the various characteristics of tests of abstraction. Examine the cross cultural considerations and accommodations for persons with disability. 3+3
8. Discuss the different areas of diagnostic interview. 6
9. Describe Rorschach Test. 6

SECTION - C

Write short notes on **any two** of the following
questions in about 100 words each. **2x3=6**

10. Direct observation. 3
11. Mental status Examination. 3
12. Crisis Interviews. 3

| Q No | Focus Prediction | ERR Priority | Que Repeat | Marks |
|------|------------------|--------------|------------|-------|
| 1 | YES | 3 | YES | 10 |
| 2 | NO | 3 | NO | 10 |
| 3 | NO+YES | 1 | NO+YES | 4+6 |
| 4 | YES | 1 | YES | 10 |
| 5 | NO | 2 | NO+YES | 3+3 |
| 6 | NO | 1 | NO | 6 |
| 7 | YES+NO | 2 | YES+NO | 3+3 |
| 8 | NO | 1 | YES | 6 |
| 9 | YES | 3 | YES | 6 |
| 10 | NO | 1 | NO | 3 |
| 11 | YES | 1 | YES | 3 |
| 12 | YES | 1 | YES | 3 |

| Success Rate of ERR for Dec 18 Exam | | | |
|-------------------------------------|------------|-----------------|------------|
| With Options | | Without Option | |
| Out of 79 Marks | | Out of 50 Marks | |
| Marks | Percentage | Marks | Percentage |
| 53 | 70% | 50 | 100% |

| Success Rate of MAPC Focus for Dec 18 Exam | | | |
|--|------------|-----------------|------------|
| With Options | | Without Option | |
| Out of 79 Marks | | Out of 50 Marks | |
| Marks | Percentage | Marks | Percentage |
| 44 | 56% | 35 | 70% |

| Question Repeat for Dec 18 Exam | | | |
|---------------------------------|------------|-----------------|------------|
| With Options | | Without Option | |
| Out of 79 Marks | | Out of 50 Marks | |
| Marks | Percentage | Marks | Percentage |
| 50 | 63% | 44 | 88% |

| Unit Block | 1 | 2 | 3 | 4 | Total |
|---------------|------|----|-----|----|-------|
| 1 | 6 | 3 | 10 | 10 | 29 |
| 2 | 10,6 | ** | 3,3 | ** | 22 |
| 3 | 10 | 6 | ** | ** | 16 |
| 4 | ** | 6 | ** | 6 | 12 |
| Total | 32 | 15 | 16 | 16 | 79 |

Guessing For Dec 18 Exam was

| 1 st Priority | | 2 nd Priority | | 3 rd Priority | |
|-----------------------------|------|--------------------------|-------|--------------------------|------|
| Block | Unit | Block | Unit | Block | Unit |
| 1 | 1,2 | 1 | ** | 1 | 3,4 |
| 2 | 1,3 | 2 | 4 | 2 | 2 |
| 3 | 1 | 3 | 2,3,4 | 3 | ** |
| 4 | ** | 4 | 3,4 | 4 | 1,2 |
| 46% of Questions | | 36% of Questions | | 18% of Questions | |
| 36 Marks | | 29 Marks | | 14 Marks | |
| Actual Marks in Dec 18 Exam | | | | | |
| 41 Marks | | 12 Marks | | 26 Marks | |
| 52 % | | 15 % | | 33 % | |