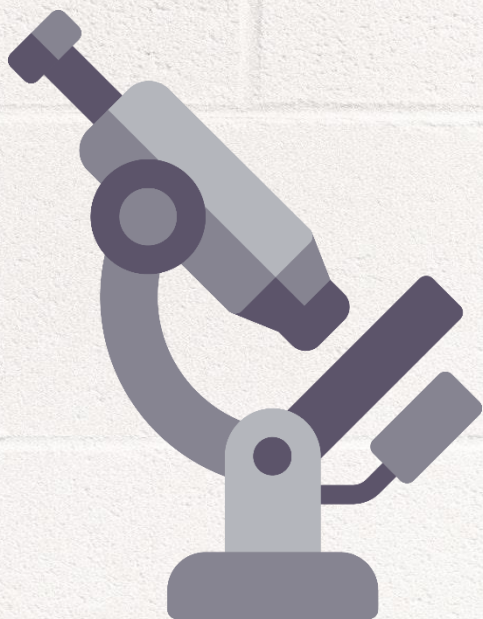


IGNOU MAPC Dec 18 Exam

DIAGNOSIS

MPCE-013

PSYCHOTHERAPEUTIC METHODS



www.MAPChelp.com

Get Solved Question Papers on www.springseason.in

00482

MASTER OF ARTS (PSYCHOLOGY)

Term-End Examination

December, 2018

MPCE-013 : PSYCHOTHERAPEUTIC METHODS

Time : 2 hours

Maximum Marks : 50

Note : All the sections are compulsory.

SECTION - A

Answer **any two** of the following questions in
about **450** words each : **2x10=20**

1. Describe various counselling process of client centered therapy. **10**
2. What is multiple family group therapy ? Discuss the techniques of family therapy. **3+7**
3. Define the nature of couples therapy. Discuss its different approaches. **3+7**
4. Explain various areas of application of behaviour modification procedures. **10**

SECTION - B

Answer **any four** of the following questions in
about 450 words each : 4x6=24

5. Describe object relation theory. 6
6. Discuss different ways to psychotherapy integration. 6
7. Define 'play therapy' and describe its application as a psychotherapy. 2+4
8. Discuss the application of psychotherapy in AIDS. 6
9. Discuss the use of interpersonal therapy for treating depression in adolescents. 6

Get Solved Question Papers on www.springseason.in

SECTION - C

Write short notes on **any two** of the following in
about 100 words each : 2x3=6

10. Group psychotherapy. 3
11. 'Circle of security'. 3
12. Self Identity and Gender Identity. 3



| Q No | Focus Prediction | ERR Priority | Que Repeat | Marks |
|------|------------------|--------------|------------|-------|
| 1 | YES | 3 | YES | 10 |
| 2 | NO+YES | 2 | NO+YES | 3+7 |
| 3 | YES | 3 | YES | 10 |
| 4 | YES | 1 | YES | 10 |
| 5 | YES | 1 | YES | 6 |
| 6 | YES | 1 | YES | 6 |
| 7 | YES | 2 | YES | 6 |
| 8 | YES | 3 | NO | 6 |
| 9 | YES | 2 | YES | 6 |
| 10 | YES | 2 | YES | 3 |
| 11 | NO | 3 | YES | 3 |
| 12 | YES | 1 | YES | 3 |

| Success Rate of ERR for Dec 18 Exam | | | |
|-------------------------------------|------------|-----------------|------------|
| With Options | | Without Option | |
| Out of 79 Marks | | Out of 50 Marks | |
| Marks | Percentage | Marks | Percentage |
| 50 | 63% | 50 | 100% |

| Success Rate of MAPC Focus for Dec 18 Exam | | | |
|--|------------|-----------------|------------|
| With Options | | Without Option | |
| Out of 79 Marks | | Out of 50 Marks | |
| Marks | Percentage | Marks | Percentage |
| 73 | 92% | 50 | 100% |

| Question Repeat for Dec 18 Exam | | | |
|---------------------------------|------------|-----------------|------------|
| With Options | | Without Option | |
| Out of 79 Marks | | Out of 50 Marks | |
| Marks | Percentage | Marks | Percentage |
| 70 | 89% | 50 | 100% |

| Unit | 1 | 2 | 3 | 4 | Total |
|-------|-----|------|----|----|-------|
| Block | | | | | |
| 1 | 6,3 | ** | ** | 3 | 12 |
| 2 | 10 | ** | ** | 6 | 16 |
| 3 | 10 | 10,3 | 10 | ** | 33 |
| 4 | 6,6 | ** | ** | 6 | 18 |
| Total | 41 | 13 | 10 | 15 | 79 |

Guessing For Dec 18 Exam was

| 1 st Priority | | 2 nd Priority | | 3 rd Priority | |
|-----------------------------|-------|--------------------------|------|--------------------------|-------|
| Block | Unit | Block | Unit | Block | Unit |
| 1 | 1,2 | 1 | 3 | 1 | 4 |
| 2 | 1,2,4 | 2 | 3 | 2 | ** |
| 3 | ** | 3 | 2 | 3 | 1,3,4 |
| 4 | ** | 4 | 1 | 4 | 2,3,4 |
| 54% of Questions | | 26% of Questions | | 20% of Questions | |
| 43 Marks | | 20 Marks | | 16 Marks | |
| Actual Marks in Dec 18 Exam | | | | | |
| 25 Marks | | 25 Marks | | 29 Marks | |
| 32 % | | 32 % | | 36 % | |