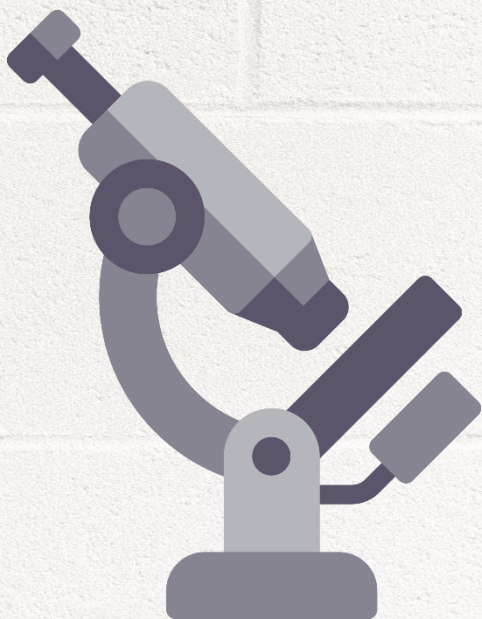


IGNOU MAPC Dec 18 Exam

DIAGNOSIS

MPCE-021

COUNSELLING PSYCHOLOGY



www.MAPChelp.com

03701

MASTER OF ARTS (PSYCHOLOGY)

Term-End Examination

December, 2018

MPCE-021 : COUNSELLING PSYCHOLOGY

Time : 2 hours

Maximum Marks : 50

Note : All sections are compulsory.

SECTION - A

Answer any two of the following questions in
about 450 words each : $2 \times 10 = 20$

1. Discuss the existential approach in terms of view
of human nature, goals and techniques. $4+3+3$
2. Discuss the various steps in art therapy. 10
3. Explain the operant conditioning Treatments in
counseling. 10
4. Describe anorexia nervosa and bulimia nervosa 10
in terms of diagnostic criteria and impact.

SECTION - B

Answer any four of the following questions in
about 250 words each : $4 \times 6 = 24$

5. Describe the important aspects in terminating a
counselling relationship. 6
6. Discuss the importance of physical setting and
client qualities in the counseling situation. $3+3$

7. ✓ Explain systematic desensitization with the help of an example. 6
8. Describe solution focused techniques. 6
9. ✓ Providing the Meaning of Substance Abuse, 2+4 explain Addictive Behaviour.

SECTION - C

Write short notes on **any two** of the following in about 100 words each. 2x3=6

10. Aversive therapy. 3
11. Transference and counter-transference. 3
12. ✓ Aims of HIV/AIDS Counselling. 3

Get Solved Question Papers on www.springseason.in

Metaphor if

MAPC  **HELP.com**

Q No	Focus Prediction	ERR Priority	Que Repeat	Marks
1	YES	1	NO	10
2	YES	3	YES	10
3	YES	2	YES	10
4	NO	3	NO	10
5	YES	2	YES	6
6	YES	2	NO+YES	3+3
7	YES	2	NO	6
8	YES	1	YES	6
9	YES	3	NO	6
10	YES	2	YES	3
11	YES	2	NO	3
12	YES	3	NO	3

Success Rate of ERR for Dec 18 Exam (Priority 1 + Priority 2)

With Options		Without Option	
Out of 79 Marks		Out of 50 Marks	
Marks	Percentage	Marks	Percentage
50	63%	50	100%

Success Rate of MAPC Focus for Dec 18 Exam

With Options		Without Option	
Out of 79 Marks		Out of 50 Marks	
Marks	Percentage	Marks	Percentage
69	87%	50	100%

Question Repeat for Dec 18 Exam

With Options		Without Option	
Out of 79 Marks		Out of 50 Marks	
Marks	Percentage	Marks	Percentage
38	48%	38	76%

Unit	1	2	3	4	Total
Block					
1	**	6,6	10	**	22
2	3	10,6,3	10	6	38
3	3	**	**	6	9
4	**	**	**	10	10
Total	6	31	20	22	79

Guessing For Dec 18 Exam was

1 st Priority		2 nd Priority		3 rd Priority	
Block	Unit	Block	Unit	Block	Unit
1	3	1	2	1	3
2	4	2	1,2	2	3
3	3	3	2	3	1,4
4	2	4	1	4	1,2,4
48% of Questions		28% of Questions		24% of Questions	
38 Marks		22 Marks		19 Marks	
Actual Marks in Dec 18 Exam					
16 Marks		34 Marks		39 Marks	
20 %		43 %		49 %	