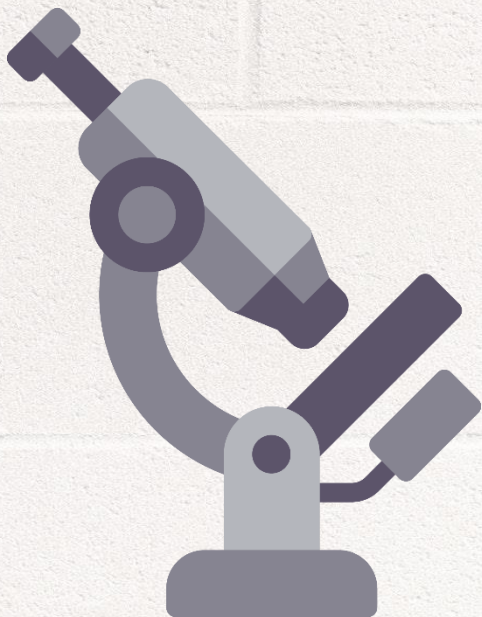


IGNOU MAPC Dec 18 Exam

# **DIAGNOSIS**

MPCE-022

**ASSESSMENT IN COUNSELLING  
AND GUIDANCE**



**[www.MAPChelp.com](http://www.MAPChelp.com)**

**MASTER OF ARTS (PSYCHOLOGY)**

**Term-End Examination**

**December, 2018**

**MPCE-022 : ASSESSMENT IN COUNSELLING  
AND GUIDANCE**

*Time : 2 hours*

*Maximum Marks : 50*

*Note : All sections are compulsory.*

**SECTION - A**

Answer any two of the following questions in  
about 450 words each :  $2 \times 10 = 20$

1. Define behavioural counselling. Discuss the techniques of behavioural counselling. 3+7
2. What is school guidance programme ? Describe various guidances services in school guidance on counselling programme. 3+7
3. Discuss the Goals and steps in narrative counselling. 10
4. Discuss the components of psychological assessment and its areas of application. 4+6

**SECTION - B**

Answer any four of the following questions in  
about 250 words each.

$4 \times 6 = 24$

5. Discuss various characteristics of a good psychological test. 6

- 6/ Discuss the principles on practical steps for reducing risk of ill health and promoting health. 3+3
7. Define counselling and guidance. Discuss the inter relation between counselling, and career planning. 2+4
8. Describe the techniques of rational emotive therapy. 6
- 9/ Discuss various assessment complexities in psychological assessment. 6

**Get Solved Question Papers on [www.springseason.in](http://www.springseason.in)**

#### SECTION - C

Write short notes on **any two** of the following in 100 words each :

2x3=6

10. Decision Making. 3
11. Self concept and Ideal self. 3
12. Case History Interview. 3

**MAPC**  **HELP.com**

Q No	Focus Prediction	ERR Priority	Que Repeat	Marks
1	NO	2	NO+YES	3+7
2	NO	2	NO	10
3	YES	3	NO	10
4	NO+YES	2	NO+YES	4+6
5	YES	1	YES	6
6	YES	2	YES	6
7	NO+YES	3	YES+NO	2+4
8	YES	2	YES	6
9	YES	3	YES	6
10	NO	3	NO	3
11	YES	2	NO	3
12	YES	1	YES	3

Success Rate of ERR for Dec 18 Exam			
With Options		Without Option	
Out of 79 Marks		Out of 50 Marks	
Marks	Percentage	Marks	Percentage
54	68%	44	88%

Success Rate of MAPC Focus for Dec 18 Exam			
With Options		Without Option	
Out of 79 Marks		Out of 50 Marks	
Marks	Percentage	Marks	Percentage
50	63%	46	92%

Question Repeat for Dec 18 Exam			
With Options		Without Option	
Out of 79 Marks		Out of 50 Marks	
Marks	Percentage	Marks	Percentage
42	53%	40	80%

Unit	1	2	3	4	Total
Block					
1	6	6	**	10	22
2	3	**	3	10	16
3	**	10,6	6,3	6	31
4	10	**	**	**	10
Total	19	22	12	26	79

## Guessing For Dec 18 Exam was

1 <sup>st</sup> Priority		2 <sup>nd</sup> Priority		3 <sup>rd</sup> Priority	
Block	Unit	Block	Unit	Block	Unit
1	1	1	3,4	1	2
2	1,2	2	3	2	4
3	**	3	2,4	3	1,3
4	4	4	1	4	2,3
41% of Questions		36% of Questions		23% of Questions	
32 Marks		29 Marks		18 Marks	
Actual Marks in Dec 18 Exam					
9 Marks		45 Marks		25 Marks	
11 %		57 %		32 %	