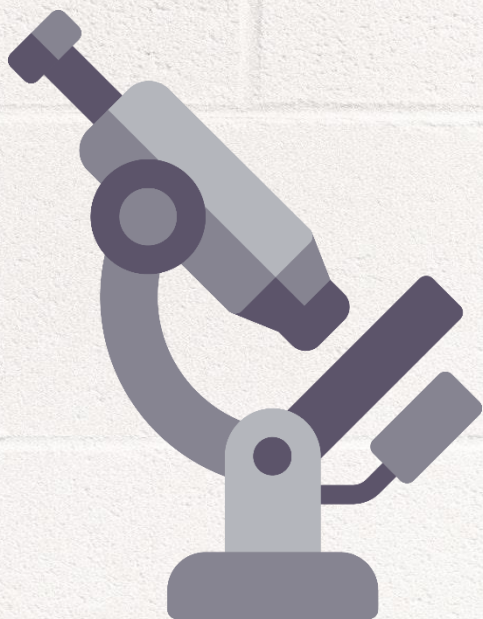


IGNOU MAPC Dec 18 Exam

# **DIAGNOSIS**

MPCE-033

**ORGANIZATIONAL DEVELOPMENT**



**[www.MAPChelp.com](http://www.MAPChelp.com)**

00050

## MASTER OF ARTS (PSYCHOLOGY)

Term-End Examination

December, 2018

**Get Solved Question Papers on [www.springseason.in](http://www.springseason.in)**

**MPCE-033 : ORGANISATIONAL DEVELOPMENT**

*Time : 2 hours*

*Maximum Marks : 50*

*Note : All sections are compulsory.*

### SECTION - A

Answer any two of the following questions in  
about 450 words each : 2x10=20

1. Describe the characteristics of organisational development. 10
2. Explain the concept of team work. Discuss the problems affecting team work. 5+5
3. Explain resistance to change. Discuss the preparation that needs to be carried out before implementing change. 3+7
4. Define organisational development interventions and discuss major families of organisational development intervention activities. 3+7



**SECTION - B**

Answer **any four** of the following questions in  
about 250 words each : **4x6=24**

5. Describe action research and explain the major theories. 3+3
6. Elucidate the role of managers in participation and empowerment. 6
7. Describe the features of parallel learning structures. 6
8. Discuss the purpose of carrying out diagnosis in an organisation. 6
9. Explain survey feedback and appreciative inquiry. 3+3

**SECTION - C**

Write short notes on **any two** of the following in  
about 100 words each : **2x3=6**

10. Job design 3
11. Organisational change 3
12. Third wave consulting 3

---

**MAPC**  **HELP.com**

Q No	Focus Prediction	ERR Priority	Que Repeat	Marks
1	YES	1	YES	10
2	NO	1	YES	10
3	YES	1	YES	10
4	YES	3	NO+YES	3+7
5	YES	1	YES	6
6	YES	1	YES	6
7	YES	2	YES	6
8	NO	3	YES	6
9	NO	2	YES	6
10	YES	1	YES	3
11	YES	2	YES	3
12	NO	3	NO	3

Success Rate of ERR for Dec 18 Exam			
With Options		Without Option	
Out of 79 Marks		Out of 50 Marks	
Marks	Percentage	Marks	Percentage
60	76%	50	100%

Success Rate of MAPC Focus for Dec 18 Exam			
With Options		Without Option	
Out of 79 Marks		Out of 50 Marks	
Marks	Percentage	Marks	Percentage
65	82%	44	88%

Question Repeat for Dec 18 Exam			
With Options		Without Option	
Out of 79 Marks		Out of 50 Marks	
Marks	Percentage	Marks	Percentage
73	92%	50	100%

Unit	1	2	3	4	Total
Block					
1	**	**	**	6,3	9
2	6	10	6	3	25
3	**	6	10	3	19
4	10	**	6	10	26
Total	16	16	22	25	79

## Guessing For Dec 18 Exam was

1 <sup>st</sup> Priority	
Block	Unit
1	4
2	1,2
3	3
4	4
51% of Questions	
41 Marks	

2 <sup>nd</sup> Priority	
Block	Unit
1	2
2	3,4
3	**
4	3
27% of Questions	
21 Marks	

3 <sup>rd</sup> Priority	
Block	Unit
1	1,3
2	**
3	1,2,4
4	1,2
22% of Questions	
17 Marks	

## Actual Marks in Dec 18 Exam

45 Marks
57 %

15 Marks
19%

19 Marks
24 %