

MPEC - 011 Psychopathology

Dec 2021 Exam



EXAM **FOCUS**

Disclaimer

Please note that all the suggestions and observations are based on the STATISTICAL analysis of the previous year question papers. So studying only books/blocks/units/points given in this booklet may be risky, as University can change the question paper pattern and questions at any time.

Further, all marking details and patterns related to respective exam and blocks are exhibited for respective subjects so that one can easily make decisions/assumptions and follow the same for the study.

Though important books/blocks/units/points are given in this booklet but it is strongly advisable to go through the entire content provided by the University.

For all the latest updates on IGNOU MAPC Course
Telegram Channel



MAPC HELP

www.springseason.in / www.mapchelp.com

Past Performance

Important Topics

Name of the Subject	Success %					
	Dec 18	June 19	Dec 19	June 20	Dec 20	June 21
Psychopathology	94%	94%	88%	76%	100%	100%
Psychodiagnostics	70%	80%	88%	90%	86%	100%
Psychotherapeutic Methods	100%	100%	76%	96%	84%	94%

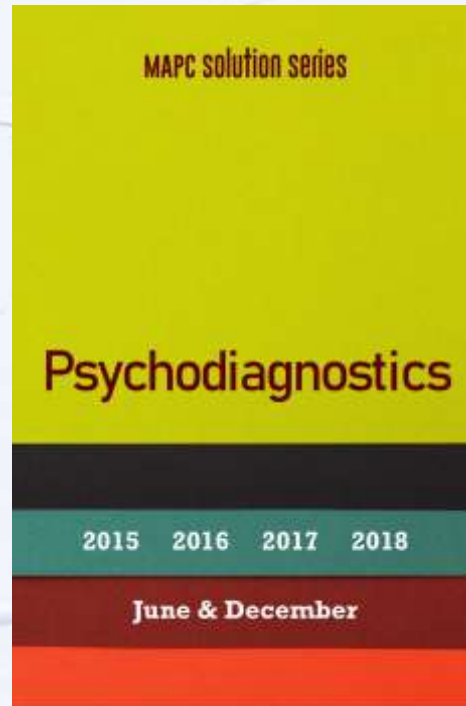
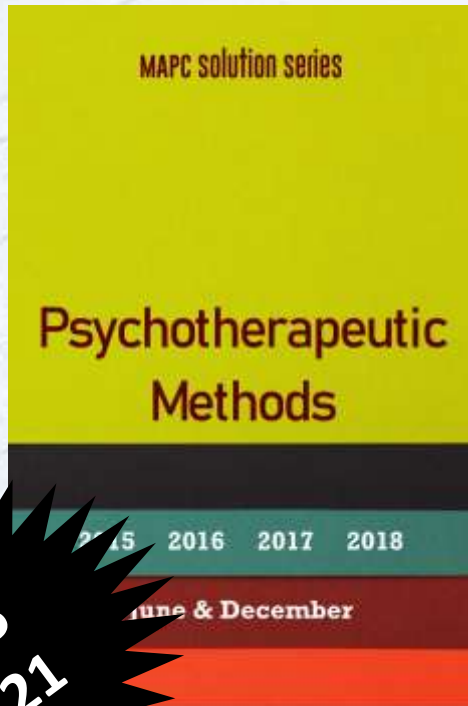
Question Repeats % in Exam

Question Repeats %						
Name of the Subject	Dec 18	June 19	Dec 19	Jun 20	Dec 20	June 21
Psychopathology	94%	88%	92%	100%	100%	94%
Psychodiagnostics	88%	100%	94%	96%	86%	100%
Psychotherapeutic Methods	100%	100%	94%	100%	100%	94%



Delivery starts from
6th Dec 2021

IGNOU
MAPC



Rs 125 per
Subject

June 15
to Jun 21

E-book

MAPC Solved Question Papers

www.springseason.in



Delivery starts from
20th Dec 2021

IGNOU
MAPC

MAPC EXAM GUIDE

For Dec 2021 Exam

MPCE-011

Psychopathology

All Important Topics as per MAPC Focus

MAPC EXAM GUIDE

For Dec 2021 Exam

MPCE-012

Psychodiagnostics

All Important Topics as per MAPC Focus

MAPC EXAM GUIDE

For Dec 2021 Exam

MPCE-013

Psychotherapeutic M

All Important Topics as per

Rs 150 per
Subject

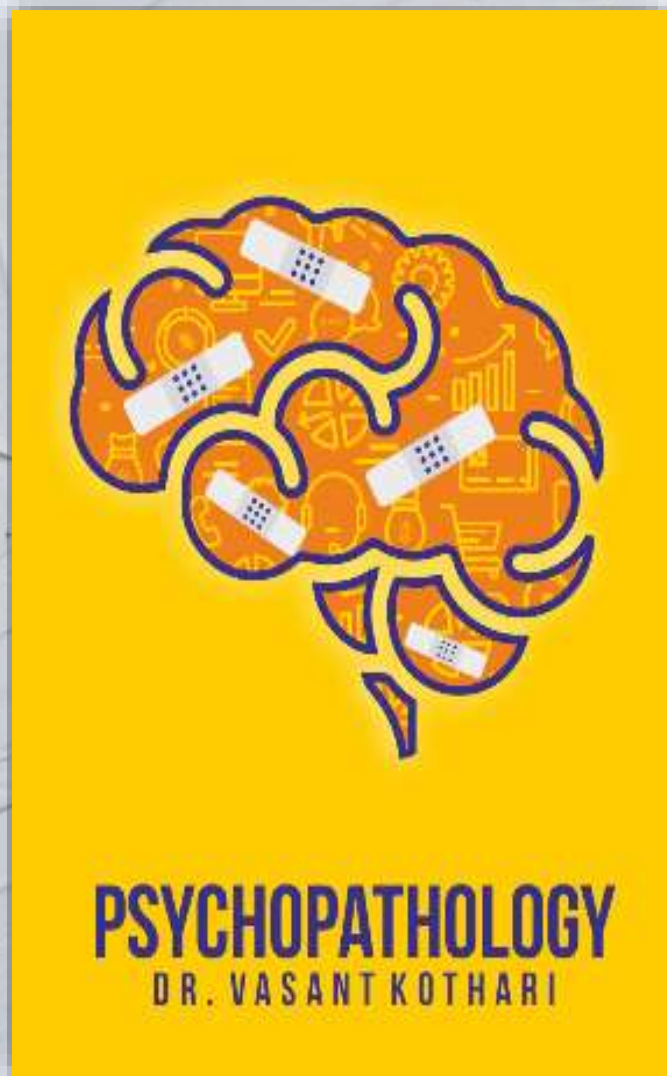
Reduce
your
study load
by up to
70%

Available
during
Exam

READ what is **NECESSARY**

www.springseason.in

Exam Focus For the **people** who are **following this book** which is specially written for **MAPC IGNOU Students**



Psychopathology

by **Dr Vasant Kothari**

ISBN: 978-81-943314-2-1

Pages: 288

Price: ~~Rs 400~~ → **Rs 320**

Available for purchase at

www.springseason.in & **Amazon**

MUST READ TOPICS for Dec 2021 Exam

Chapter No.	Topic No.				
1	1.3.2	1.3.3	1.3.4	**	**
2	2.1.1	**	**	**	**
3	3.3	3.4	3.5	**	**
4	4.1.1/3	4.2	4.3.1/2/4	4.4	**
5	5.2	5.2.2	5.3.3	5.3.3.1/2	5.3.4
6	6.1/2	6.1.3	6.1.4	6.2.3	6.2.4
7	7.1	**	**	**	**
8	8.1	8.1.1.1/2/3/4	8.1.3	8.1.4	8.2.4
9	9.2.1	9.2.2	9.3	9.3.2	**
10	10.2	10.3	10.3.3	10.4	10.5
11	11.1	11.1.1	11.1.2	11.1.5	**
12	12.1	12.1.3.1	12.1.3.2	12.1.3.4	12.1.4
13	13.1.1	13.2	13.4	13.4.4	**
14	14.1.3	14.3	14.5	**	**
15	15.4	**	**	**	**
16	16.1.1	16.1.3	16.1.4	16.4	**
17	17.1	17.1.3	17.2	**	**
18	18.1.3	18.1.4	18.1.5	**	**
19	19.1	**	**	**	**
20	20.1	20.2	**	**	**

Above data is purely based on **ASSUMPTIONS**

Please do all sub points unless and until specified

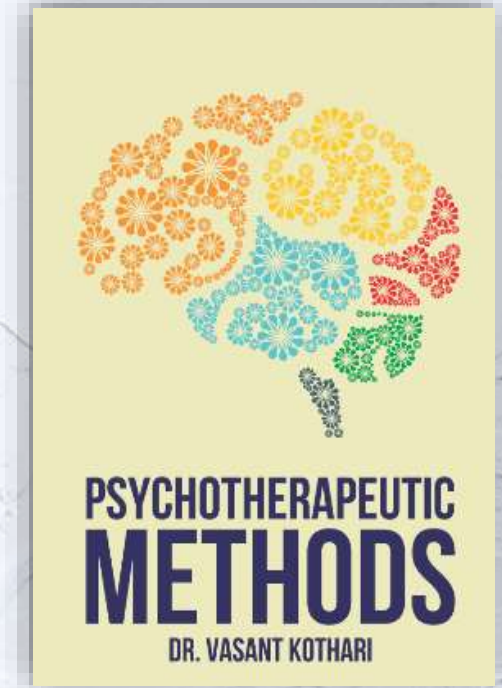
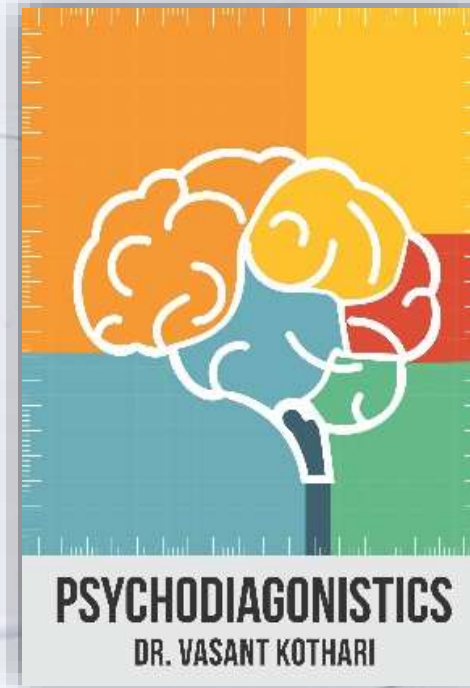
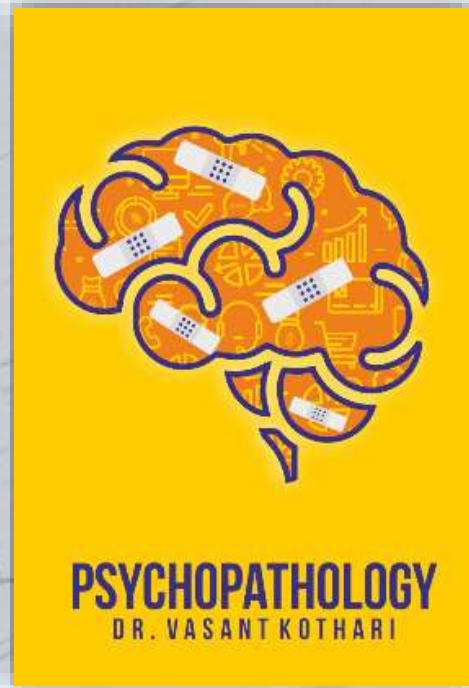


PSYCHO
DR. VAS



**AVAILABLE
NOW**

IGNOU
MAPC



Simple Language & Precise Content

www.springseason.in

Rs
960+30



This document contains
topics in Q & A Format only
for the **IMPORTANT**

IGNOU

MAPC

Read ONLY
what is
IMPORTANT

TOPICS as per
MAPC Focus

MAPC EXAM GUIDE

For Dec 2021 Exam

MPCE-011

Psychopathology

All Important Topics as per MAPC Focus

Prediction of Important Topics

Past Performance (MPCE-011)

Dec 18 94%

June 19 88%

Dec 19 92%

June 20 100%

Dec 20 100%

June 21 94%

www.springseason.in

Block-1 Foundations of Psychopathology

Unit 1 - A Brief History of Psychopathology

- Psychoanalytic Approach
- Humanistic Approach
- Behavioural Approach

Unit 2 - Classification of Psychopathology: DSM IV TR

- Approaches to the Classification of Psychopathology

Unit 3 - Developmental Pathogenesis

- Biological Causes
- Psychosocial Causes
- Parenting Styles
- Parental Psychopathology
- Parenting Styles
- Socio Cultural Causes

Unit 4 - Childhood Mental Disorders

- Autistic Disorder
- Asperger Syndrome
- Attention Deficit Hyperactive Disorders (ADHD)
- Oppositional Defiant Disorder
- Conduct Disorder
- Tick Disorders
- Mental Retardation

Please do all sub points unless and until specified

Block-2 Generalized Anxiety Disorder and Other Mild Mental Disorders

Unit 1 - Anxiety Disorders, Panic and Phobias

- Panic Attack: Symptoms and Clinical Features
- Epidemiology of Panic Attacks
- A Case Study of Specific Phobia
- Aetiology of Phobic Disorder
- Treatment of Phobic Disorder

Unit 2 - Generalised Anxiety Disorder and Obsessive Compulsive Disorder

- Generalised Anxiety Disorder
 - Symptoms and clinical features.. Aetiology... Treatment
- Obsessive Compulsive Disorder: Symptoms and Clinical Features
- A Case Study of Obsessive Compulsive Disorder
- Obsessive Compulsive Disorder
 - Aetiology .. Treatment

Unit 3 - Post Traumatic Stress Disorder (PTSD)

- Post- Traumatic Stress Disorder: Symptoms and Clinical Features

Unit 4 - Somatoform Disorder and Dissociative Disorder

- Somatoform Disorders: Symptoms and Clinical Features
- Pain Disorder... Hypochondriasis...
- Conversion Disorder..
- Aetiology of Somatoform Disorders
- Treatment of Somatoform Disorders
- Treatment of Dissociative Disorders

Please do all sub points unless and until specified

Block-3 Mood Disorders

Unit 1 - Mild, Moderate and Major Depressive Disorder

- Symptoms of Mild Depression
- Dysthymic Disorder
- Major Depressive Disorder
- Causes of Major Depression

Unit 2 - Bipolar Disorder

- Bipolar Disorder
- Classification of Bipolar Disorder
- Cyclothymia
- Causes of Bipolar Disorder
- Treatment

Unit 3 - Other Mood Disorders: Mood Disorder due to General Medical Condition

- Mood Disorder Due to General Medical Condition
- Parkinson Disease
- Multiple Sclerosis
- Parathyroid Disorder

Unit 4 - Substance Induced Mood Disorder

- Substance Induced Mood Disorder
- Depressants
- Stimulants
- Hallucinogens

Please do all sub points unless and until specified

Block-4 Schizophrenia and Other Psychotic Disorders

Unit 1 - Schizophrenia: Etiology, Neurocognitive Functioning and Interpersonal Aspects

- Characteristics of Schizophrenia
- Etiology of Schizophrenia
- Treatment of Schizophrenia
- Metacognitive Training

Unit 2 - Paranoid and Delusional Disorder

- Kinds of Paranoia
- Delusional Disorder
- Characteristic Features
- Types of Delusional Disorder
- Delusions of Grandeur
- Treatment Approaches to Paranoia and Delusional Disorder

Unit 3 - Psychotic Disorder due to General Medical Condition

- Causes of Psychotic Disorders
- Causes of Psychotic Disorders due to medical conditions

Unit 4 - Substance Induced Psychotic Disorder

- Causes of Substance Induced Psychotic Disorders
- Essential Features of Substance Induced Psychotic Disorders
- Treatments
- Difference Between Substance Induced Psychotic Disorders and Other Psychotic

Please do all sub points unless and until specified

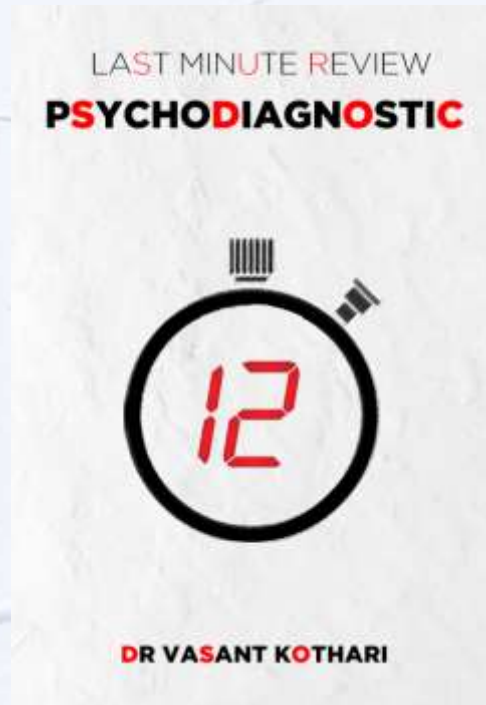
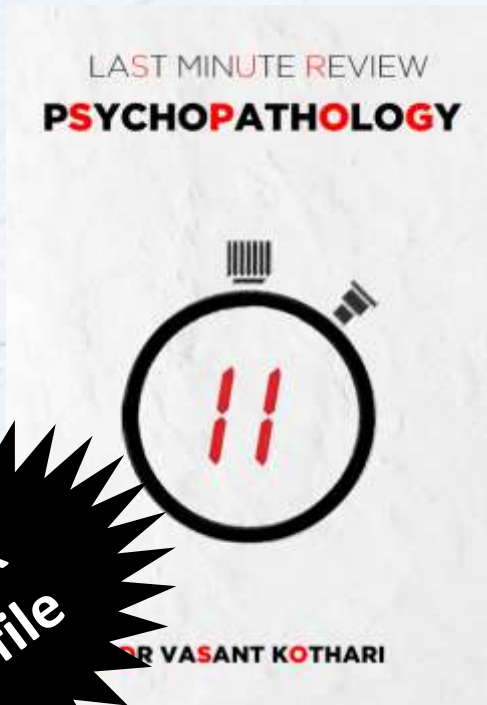
Block-5 Personality Disorders	
Unit 1 - Borderline Personality Disorder	
<ul style="list-style-type: none"> • Personality Disorders (Clusters) • Cluster C • Borderline Personality Disorder 	
Unit 2 - Narcissistic Personality Disorder	
<ul style="list-style-type: none"> • Subtypes of Narcissistic Personality Disorder • Causes of Narcissistic Personality Disorder • Treatment of Narcissistic Personality Disorder 	
Unit 3 - Dependent and Histrionic Personality Disorder	
<ul style="list-style-type: none"> • Dependent Personality Disorder • Histrionic Personality Disorder 	
Unit 4 - Schizoid and Paranoid Personality Disorder	
<ul style="list-style-type: none"> • Schizoid Personality Disorder • Paranoid Personality Disorder 	

Please do all sub points unless and until specified



Delivery starts
from **6th** Dec 2021

IGNOU
MAPC



Only Rs 99
per Subject

eBook
PDF file

MAXIMUM Syllabus MINIMUM Words

www.springseason.in

You can purchase by paying on...



7303827268



Name: Spring Season Publications

Bank: HDFC

Branch: Chikhli

Account No.: 50200032856939

IFSC Code: HDFC0002277

Account Type: Current



Or Place your order on
www.springseason.in

Once payment is made then please WhatsApp your

NAME, CITY & email ID

Ready Synopsis & Project

- ▶ Topic will be Ours
- ▶ It will cost Rs 5000 (Fixed Rate and No part payment)
- ▶ You need to take care of Guide (Go for Cooperative Guide)
- ▶ Synopsis within one week and Project after 6 months (before submission)
- ▶ No topic REPEATS
- ▶ Changes not allowed in ready synopsis & project
- ▶ If synopsis rejected.. Then new synopsis at no additional cost
- ▶ Synopsis and Project will be there in Word file
- ▶ Explanation of DATA ANALYSIS for VIVA
- ▶ Whatsapp on 7303827268



Assignment Container For Clinical & Counselling

IGNOU
MAPC

Assignment Container

PSYCHOPATHOLOGY
MPCE-011

PSYCHODIAGNOSTICS
MPCE-012

PSYCHOTHERAPEUTIC METHODS
MPCE-013

www.springseason.in

- Answers in prescribed word limits
- Least content from IGNOU Books
- Table, charts, brain maps to enhance the look of the assignment
- Rs 99 per subject (Rs 297 for All)
- e-book form (PDF File)

Assignment Container

COUNSELLING PSYCHOLOGY
MPCE-021

ASSESSMENT IN COUNSELLING
AND GUIDANCE
MPCE-022

INTERVENTIONS IN COUNSELLING
MPCE-023

www.springseason.in

For **STATISTICAL DATA ANALYSIS**
of your MAPC IGNOU Research project work

send your...



- Synopsis
- Questionnaire
- Data file (Excel)

to

mapchelp@gmail.com

You will get

- Data analysis with graphs
- Interpretation of analysis
- Standard format for writing analysis
- Explanation of analysis for viva

 73 03 82 72 68

*Personal visit not required for data analysis
All communication will be only through mobile & email*

MAPC Focus for June 22 Exam

As per Dr Vasant Kothari's Books

Will Release on 15th Feb 2022



**WhatsApp
on
7303827268**